

[www.pbwbearings.com](http://www.pbwbearings.com)



IN PURSUIT OF  
**EXCELLENCE**



**PBW BEARINGS PRIVATE LIMITED**

Plot No. G-515, G-516, G-517, Gate No. 3,  
Kishan Gate Road, Lodhika GIDC, Metoda,  
Rajkot-360021, Gujarat (India)

Phone : +91 2827 286271 / 72 / 73  
E-mail : [pbw@pbwbearings.com](mailto:pbw@pbwbearings.com)





## OUR PHILOSOPHY

At PBW, we are driven by the philosophy that whatever we are today and what we will be in future is the result of the effort we put into manufacturing of our products. We believe our achievement is more so because of the trust and confidence imposed on us by our customers. Our valued customers are key to our success, directing us towards our future endeavours and providing us with a place for improvement.



## THE BEGINNING, LANDMARK ACHIEVEMENTS

Late Shri R. C. Patel, founder of Patel Brass Works was one of the first entrepreneurs to set up manufacturing facilities at Rajkot. Established in 1948 as a small foundry, PBW started its operations by producing castings for brass items. In 1953, another small workshop was added. By 1965, PBW gained significant experience in casting and finishing of nonferrous components. Around this time, there was a need of bimetal bearings, which was identified by PBW then. Initially these were made for slow speed diesel engines. However, in 1980 high grade precision bearings were introduced for high speed engines, compressors and earthmovers.

Around 1990 PBW ventured into export of outsourced critical engineering components for engines, compressors, pumps and purifiers, Earth Movers etc. It was first to substitute import of bearings for the country.



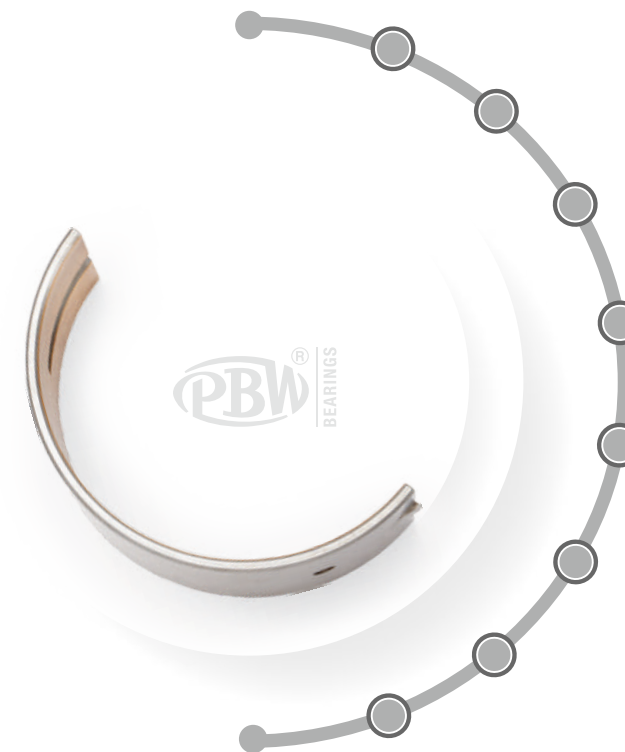


## PBW TODAY

With decades of experience and state of the art infrastructure, PBW manufactures single metal/solid bimetallic/trimetallic bearings & bushes that range up to 1000 mm diameter.

Bearings not in range can be developed based on drawings or samples. New product development is supported by in-house "Product Engineering" department.

Today, we successfully cater our products to domestic and overseas market, mainly Canada, U.S.A., Latin America, Middle East, Far East, Africa, Asia, over 34 countries.



### 40s

Established in 1948

### 50s

Leader in household brass articles

### 60s

Introduced bimetal bearings

### 70s

OEM approvals

### 80s

- Introduced special centrifugal casting technology
- Import substitution for various applications

### 90s

- Added sintered material
- Certified ISO
- Gained "Fair Business Practices" award

### Millennium

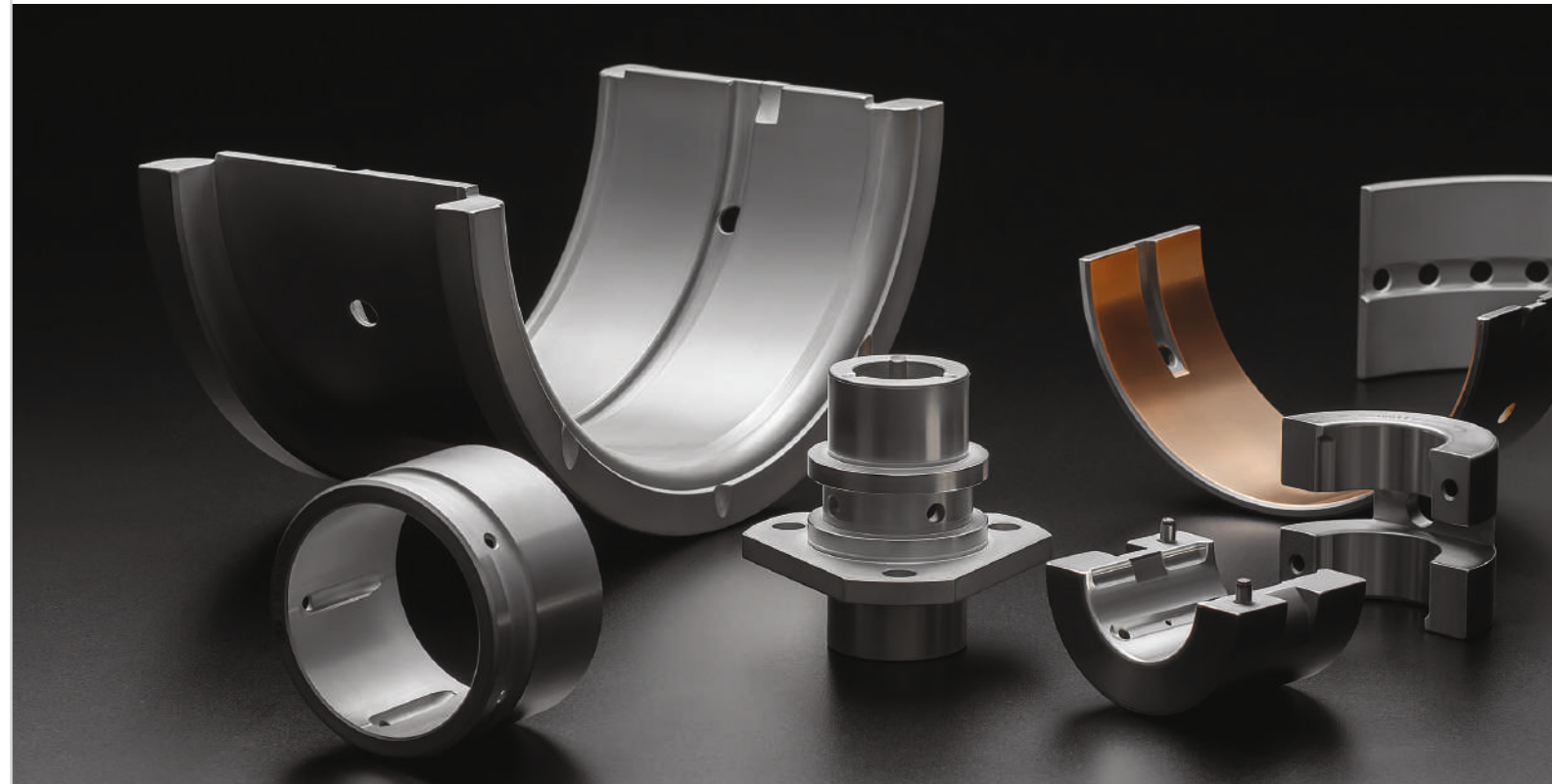
- Gained "Most Responsive Supplier" award
- Certified AAR
- Certified ISO 14001 & OHSAS 18001

### 21st Century

- Moved to advanced new facility under one roof
- Lead free lining and plating materials added
- Enhanced alloy powder making capacity

## BEARINGS TO SUIT, CUSTOMER DEMANDS

PBW continuously strives towards gaining higher level of quality standards. This is achieved by laid down systems of various analysis and statistical process controls. Necessary equipments are continuously upgraded and added to ensure meeting with the ever-growing demand of complex design requirements.



## OUR COMMITMENT, OUR CERTIFICATIONS

PBW is fully committed to supply products to meet customer requirements and ensure quality to other transactions, leading to customer delight. By thorough adherence to the quality management system and providing continuous training, we maintain a knowledgeable workforce and nurture quality culture.

The Company is certified with ISO 9001 and AAR. To ensure establishment of environment management system and achieve better standards of health and safety of our human capital, we are accredited with ISO14001, ISO45001.



## TECHNOLOGIES

Bimetal & Trimetal bearings and bushings are manufactured by indigenously developed centrifugal casting technology and sintering process which enables us to produce thick wall bearings of exceptional strength as well as thin wall bearings respectively.

In-house tool room facility has proven to be a strong support in developing jigs, fixtures & tooling to machine out critical parameters of bearings and shorter lead time.



## CENTRIFUGAL CASTING

Centrifugal casting is a casting technique works on basic principle of centrifugal force on a rotating component.

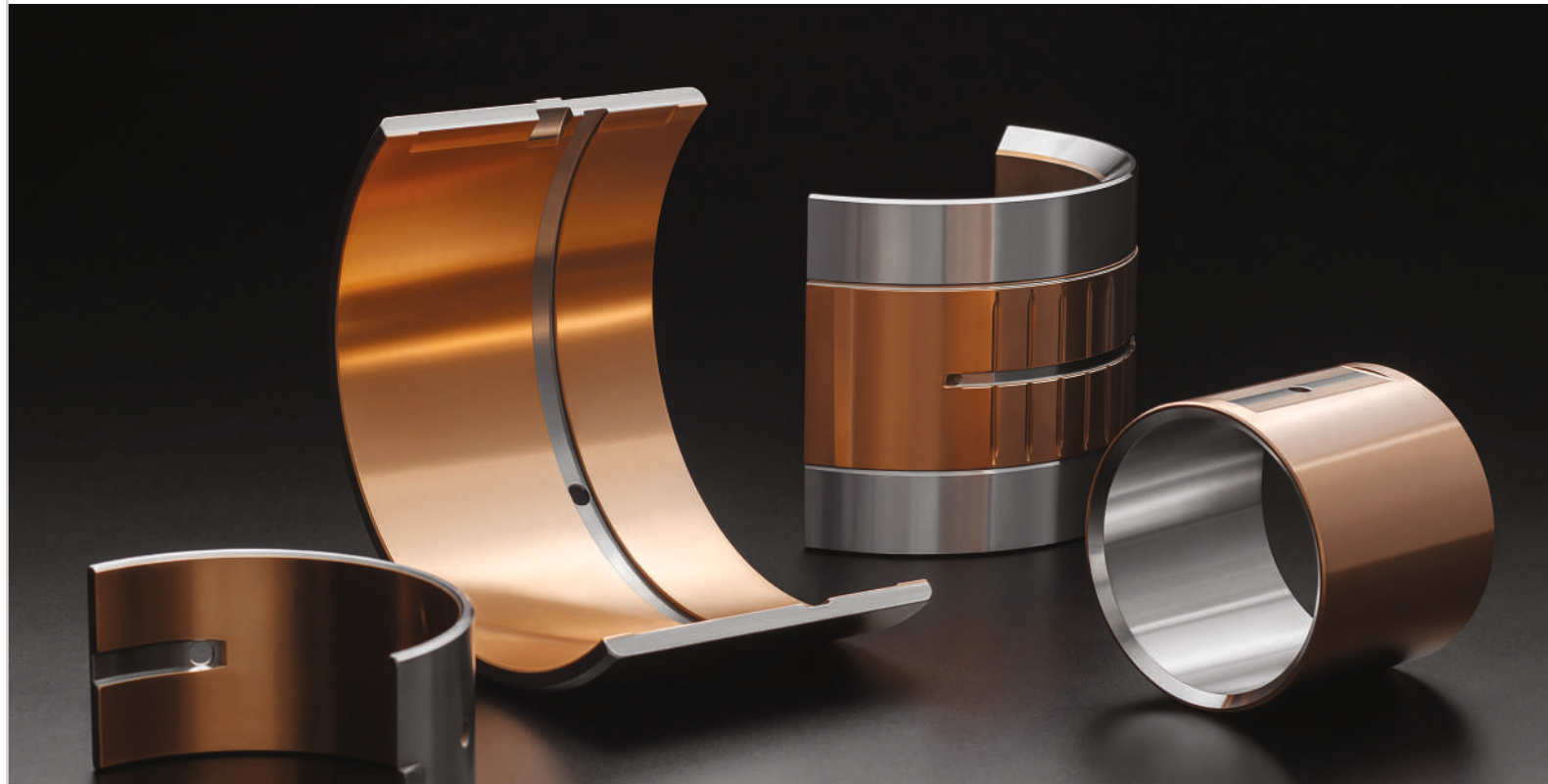
The process enables excellent bonding between two types of material, also meeting metallurgical & physical properties.

## SINTERING PROCESS

Sintering is the process of compacting and forming a solid mass of material by heat or pressure without melting it to the point of liquefaction. It is a continuous process for producing bimetallic raw material for thin wall bearings in sizable quantity.

## OUR PRODUCTS, OUR IDENTITY

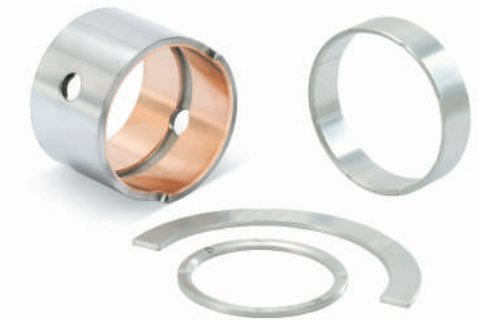
We manufacture bimetal/trimetal, thick and thin wall bearings, bushings, washers, thrust & tilting pad bearings for Railways, Oil & Gas, Maritime, Mining, Alternate Energy Industries, Offshore & Onshore and range of other reciprocating as well as rotating machinery.



### PLAIN AND FLANGE BEARINGS SHELLS



### BUSHINGS AND WASHERS



### PRECISION BUSHINGS



### JOURNAL, THRUST & TILTING PAD BEARINGS





## DRIVEN BY EXCELLENCE, FOR QUALITY OUTPUT

As a process-driven company, we look at what services and products we offer to customers and the promises implicit and explicit in those offerings. We continuously invest for technology, methods and skills to support those promises. Thus, we ensure quality checks right from sourcing the material to the finished goods, all along.



## MEASURING & TESTING





## APPLICATION, RAILWAYS

PBW has a database of OEM reference numbers for all the fast-moving parts for locomotives.

We are proud having import substituted requirement of bearings for Indian Railways. Today, we manufacture and supply complete range of bearings to Indian Railways.

We successfully cater requirements of RailRoad bearings in American continent, Middle East and Africa.

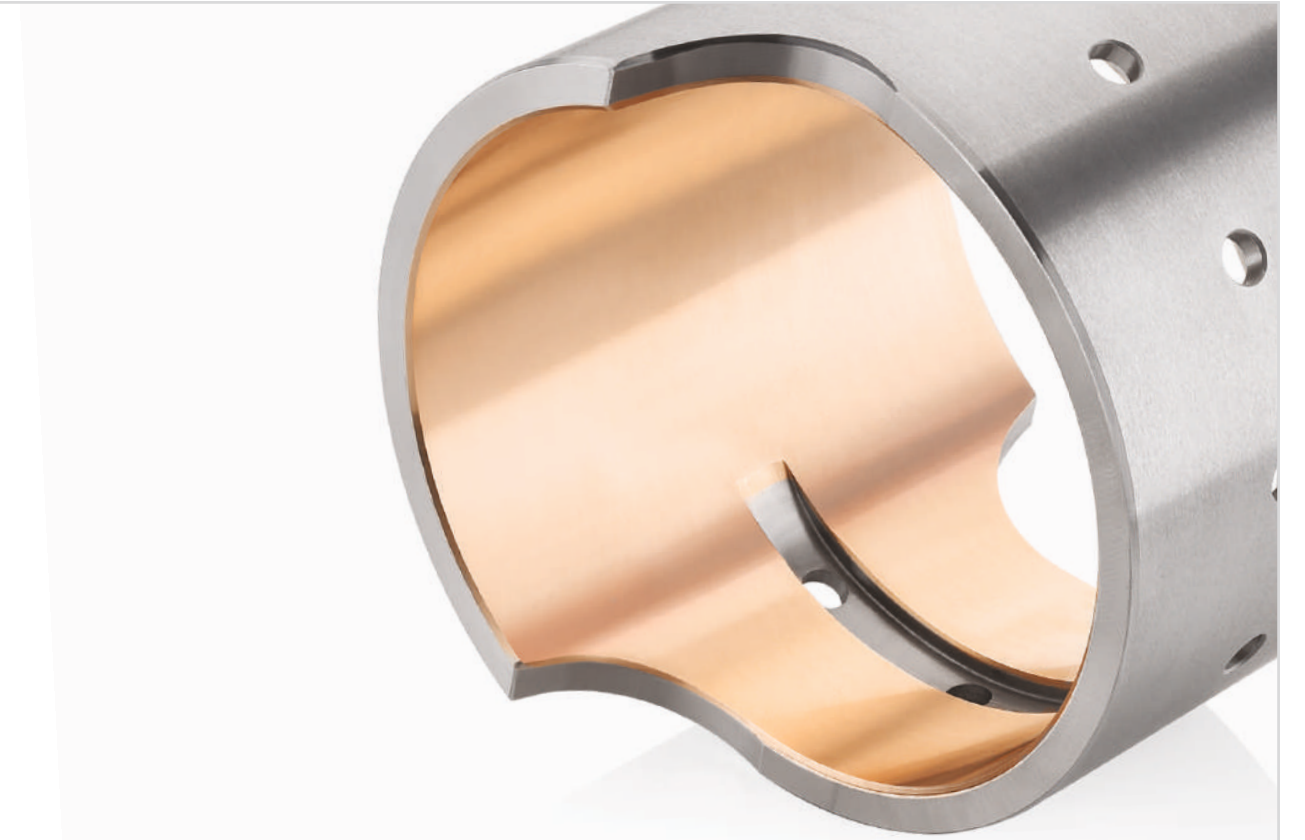




## APPLICATION, MARINE

Engines, Compressors, Turbochargers, Pumps; PBW is preferred supplier to key OEMs worldwide.

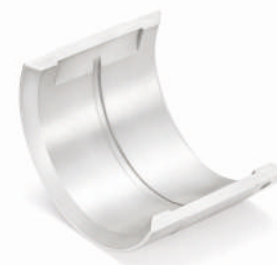
Apart from wide range of products already in our range along with comprehensive database, we are continuously developing new bearings / bushings and offer solutions to meet the steadily growing demand of this segment.



## APPLICATION, OIL & GAS

We are proud to have been chosen as a partner for development and alteration of bearings for Pumps, Compressors and Engines being used in challenging environment in Oil & Gas industry.

Thanks to our distributors and stockiest for their outstanding customer service and JIT delivery of our bearings to meet urgency of this volatile market.





## APPLICATION, INDUSTRIAL

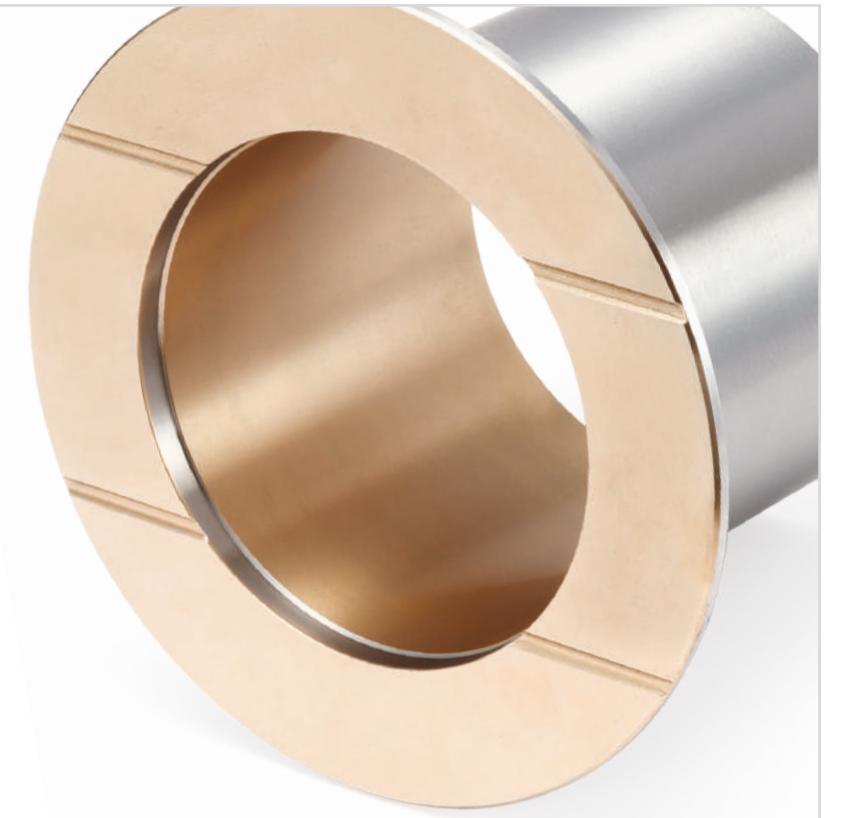
We offer range of bearing solutions for Homogenizers, Steel Mills, Gear Boxes as well as other processing machinery for various industries.

The materials and coating range available with PBW is suitable for extended life of these valuable equipments carrying forward critical jobs under different working conditions.



## APPLICATION, EARTHMOVERS & AUTOMOTIVE

With our experience and expertise, we also provide alternate options to our valued customers w.r.t. material and design. Automatic plating plant facilitates us to handle larger quantity.





## OUR SOCIETY, OUR RESPONSIBILITY

We, PBW, value in protecting our Environment, Health & Safety. To support this, we commit to;

- Comply with applicable legal and other requirements.
- Optimal utilisation of resources and prevention of pollution.
- Ensure safe and healthy working environment.
- Continually improve our EHS Management System.
- Imparting awareness and training to our employees.
- Evaluating process risk, with alternatives to ensure safe and healthy work environment.
- Working collaboratively on EHS matters with associates and community.

We, in pursuit of excellence, will make every effort to ensure that our EHS policy is an integral part of PBW's performance.



## OUR STRENGTH, OUR EMPLOYEES

We operate with a human capital of 500 people. In this rapidly changing world, we have committed ourselves to continuous training and development. This is to prepare ourselves for larger responsibilities and future advancement, thereby maintain a knowledgeable workforce and nurture a culture of quality.



- Customers
- PBW, Rajkot

## **OUR GLOBAL CLIENTELE, OUR PARTNERS**

### **Locational advantage**

Being strategically located at Rajkot, in close vicinity to the ports and well connected by rail and road line, we have unbelievable locational advantage of inbound and outbound transportation.

\* Note : The products / equipments photograph shown in this brochure are for reference purpose only and not intended to represent it as made by OEMs or others.

*Let's discuss further ...*